



# Joseph Tyrrell

## Life



He was born on November 17, 1858, in Weston, Ontario.

He studied at Upper Canada College as a teenager and later at the University of Toronto.

Joseph had scarlet fever when he was younger, so his was a little deaf and he needed to wear glasses.

Joseph died on August 26, 1937, in Toronto, Ontario, at the age of 98.

## Family



He met his wife, Edith Carey when he was at home after a trip.  
His first child Mary was born in 1896.  
The second child George was born in 1900.  
His last child Thomas was born in 1906.

## Careers



Second job was a gold mining consultant. Worked in Dawson, Yukon, first because that's where all the gold was. He later worked in Toronto because it was closer to his family and because of the cobalt and silver.

First job was at the Geological Survey of Canada. Discovered the Albertosaurus while working with the GSC. Explored parts of Canada that people thought were uninhabited by dinosaurs. Found many coal seams.



## Discoveries



1888 He led a group of explorers to find coal seams in Red Deer Valley.

Ended up finding a large coal seam that fueled Canadian industry until 1947, when oil and gas was discovered. He explored parts of Canada that people thought were uninhabited or barren.



## Albertosaurus

The first fossil Albertosaurus was discovered during 1884.

The first of his party, a geologist named T. Tompkins, was the first to name the dinosaur fossils in Canada.



The Royal Tyrrell Museum is the only museum dedicated to just paleontology. The entrance to the museum is guarded by an Albertosaurus.

It is \$35,000 a year covered in 1985.



The Learning Lounge has a life-sized bronze skeleton of an Albertosaurus.

## The Royal Tyrrell Museum

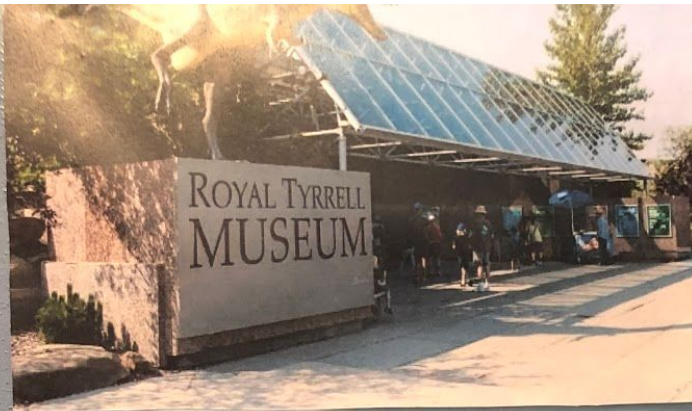


There are many life-sized skeletons in the museum.

The Royal Tyrrell Museum is named after Joseph (Bert) Tyrrell, even though he wasn't a paleontologist.







The Royal Tyrrell Museum is the only museum dedicated to just paleontology

The entrance to the museum is guarded by an Albertosaurus

It is 835 000sq feet  
opened in 1985

The Learning Lounge has a  
life-sized bronze skeleton  
of an Albertosaurus



## The Royal Tyrrell Museum

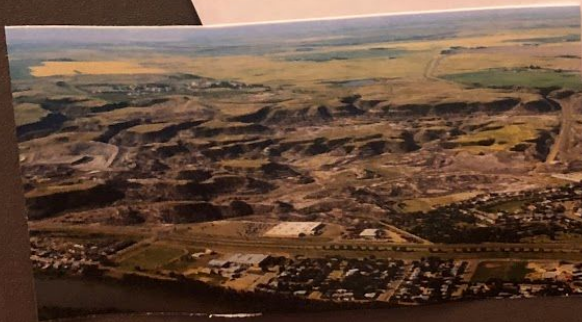


# The Royal Tyrrell Museum

There are many life-sized skeletons in the museum



The Royal Tyrrell Museum is named after Joseph Burr Tyrrell, even though he wasn't a paleontologist



located in Drumheller, Alberta



# Discoveries

1884 he led a group of explorers to find coal seams in Red Deer Valley



Ended up finding a large coal seam that fuelled Canadas economy until in 1947, when oil and gas was discovered  
He explored parts of Canada that people thought were inhabited by cannibals





# Albertosaurus

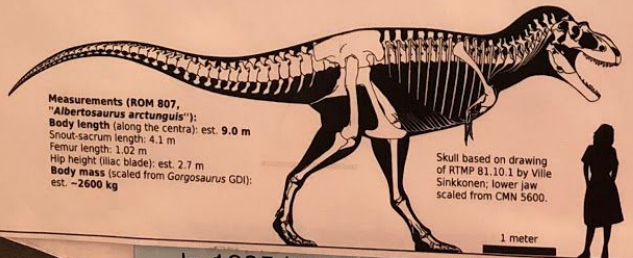
He also found *Albertosaurus sarcophagus* during 1884



The first of its genus  
A younger cousin of Tyrannosaurids  
The first carnivorous dinosaur found in Canada

***Albertosaurus sarcophagus***  
**Osborn, 1905**  
Maastrichtian  
Horseshoe Canyon Formation, Canada

Mainly based on ROM 807, as shown in Tanke & Currie, 2010. Missing elements scaled after *G. libratus* in Lambe, 1914 and Lambe, 1917.



Measurements (ROM 807, "*Albertosaurus arctunguis*):  
Body length (along the centra): est. 9.0 m  
Snout-vent length: 4.1 m  
Femur length: 1.02 m  
Hip height (iliac blade): est. 2.7 m  
Body mass (scaled from *Gorgosaurus GDI*):  
est. ~2600 kg

Skull based on drawing of RTMP 81.10.1 by Ville Sinkkonen; lower jaw scaled from CMN 5600.

In 1905 it was named *Albertosaurus sarcophagus*  
\* *Sarcophagus* means *flesh-eating*



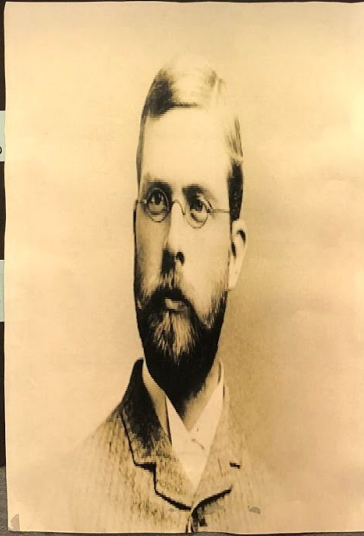
## Life

He was born on November 1<sup>st</sup>, 1858, in Weston, Ontario

He studied at Upper Canada College as a teenager and later at the University of Toronto

Joseph had Scarlet fever when he was younger, so he was a little deaf and he needed to wear glasses

Joseph died on August 26, 1957, in Toronto, Ontario, at the age of 98



## Family

He met his wife, Edith Carey when he was at home after a trip

His first child Mary was born in 1896

The second child George was born in 1900

His last child Thomas was born in 1906



# Careers



Second job was a gold mining consultant  
Worked in Dawson, Yukon, first because that's where all the gold was  
He later worked in Toronto because it was closer to his family and because of the cobalt and silver

First job was at the Geological Survey of Canada  
Discovered the *Albertosaurus* while working with the GSC  
Explored parts of Canada that people thought were inhabited by cannibals  
Found many coal seams

